



Bespoke Road Safety Solutions

Sheep Warning - VATCS



Dorman Varitext recently worked with North Yorkshire Highways and The North York Moors National Park Authority to achieve this bespoke solution designed to reduce animal fatalities and increase safety for road users.

Low Environmental Impact

The Authority were concerned about the effect the signs would have on the landscape so their objective was to source as small a sign as possible which still adhered to the Highways Agency specification.

Bespoke Solutions

The solution provided by Dorman Varitext was to manufacture a sign with diagram 549 (sheep symbol) overlaid by the text "SLOW DOWN" to meet the objectives of the local authority. In addition the vehicle detector was built into the sign instead of being positioned above the unit to further reduce the physical impact on the landscape.

High Impact LEDs

Dorman Varitext reduced the actual dimensions of the sign dramatically and thus reduced the impact on the landscape without reducing the effectiveness of the sign. The high intensity LEDs ensure that the motorist's attention is drawn to the sign and its easily understood message.

Adjustable Trigger Speeds

For the majority of the time the signs will be in a passive state i.e. the display is blank. The signs are triggered when a vehicle approaches that is travelling in excess of the pre determined trigger speed.

Proven Technology

The lasting effect of the LED signs is demonstrated by a DfT study which showed that Vehicle Activated Signs were effective over a period of more than 3 years.

■ Industry Sector

Road Safety

■ Issue

239 sheep and lambs were killed during 2008 on a particular stretch of road in the North York Moors National Park, mainly due to excess speed. The number of animals killed are increasing year on year and the standard signs have little impact on drivers. Each incident increases the possibility of further road accidents and collisions that could lead to injury or death for motorists or walkers in addition to the cost of the animal losses to local farmers.

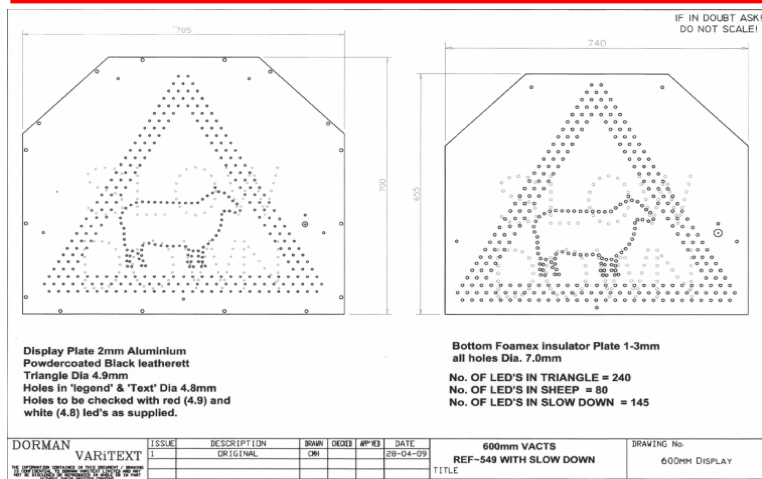
■ Solution

6 solar powered Vehicle Activated "sheep warning" signs have been located at accident black spots. When a vehicle approaches at a pre set speed the sheep symbol is displayed and this alternates with the text SLOW DOWN. Because the problem is at its greatest after lambing in the spring the signs will be deployed between April and October. To aid the ease of removal and re installation of the signs North Yorkshire County Council have sourced removable posts.

■ Benefits

Reduction in the number of sheep and lambs killed on the highway in addition to the increased road safety for motorists and walkers.

Sheep Warning VATCS



Approval drawing shows the layout of the LEDs within the sign enclosure.

Rachel Pickering, the National Park Authority's Moorland and Estate Officer has been delighted with the signs.

Mrs Pickering said "There was a concern that the signs and solar panels would be very intrusive on the open moorland landscape but we have been pleasantly surprised with the public's response. Their visual impact has been lessened by reducing the height of the post and when they are re-erected next spring the post will be painted black to reduce the impact even further. The general public understand the need for the signs as 239 sheep were killed on the North York Moors open moorland roads in 2008 alone. Whilst helping our local farmers who are already under pressure financially, we are also increasing road safety so we see the signs as an excellent way of ticking both boxes."



Lockable base and sleeve into which the post is inserted.



Contact Details:

Wennington Road
Southport
PR9 7TN

Tel: 01704 518000

Fax: 01704 518001

E-Mail: reception@dorman.co.uk

www.dorman.co.uk

DORMAN
VARITEXT