



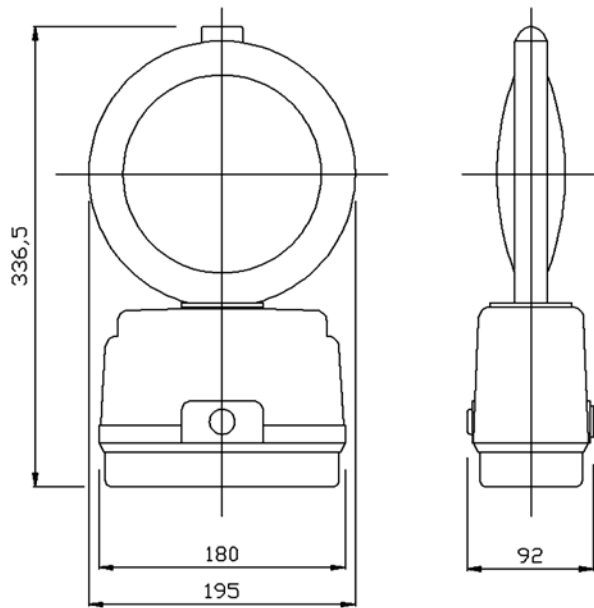
HiLITE

Benefits Include

- > Tungsten light source with high intensity circuit
- > Robust polypropylene case provides high strength
- > Tough, high impact resistant uni-directional polycarbonate lens designed for maximum light output incorporates retro reflective ring and metal carrying handle
- > Bi-directional lens available on request, colour choice includes amber, red, green, blue and clear
- > Key operated on/off switch is tamperproof

High intensity hazard warning lamp for day time use

- > 2 batteries required to operate lamp. Battery orientation is not critical making replacement quick and easy
- > Anti-theft bolt discourages battery theft
- > Cone fixing bracket is available
- > Back fixing bracket is available with thief proof bolts to be specified at time of ordering
- > Designed to meet performance requirements of BS 12352:2000.



Weight (excluding batteries)	685g
Standard zinc carbon battery	540g (each)
DAAB25 air alkaline battery	640g (each)
DAAB50 air alkaline battery	740g (each)

Flash rate – 60 flashes/min

DORMAN
 Wennington Road
 Southport PR9 7TN
 T: +44 (0)1704 518000
 F: +44 (0)1704 518001
 E: sales@dorman.co.uk
 www.dorman.co.uk



Certificate No. FM14371

DORMAN
 The Leading Light