

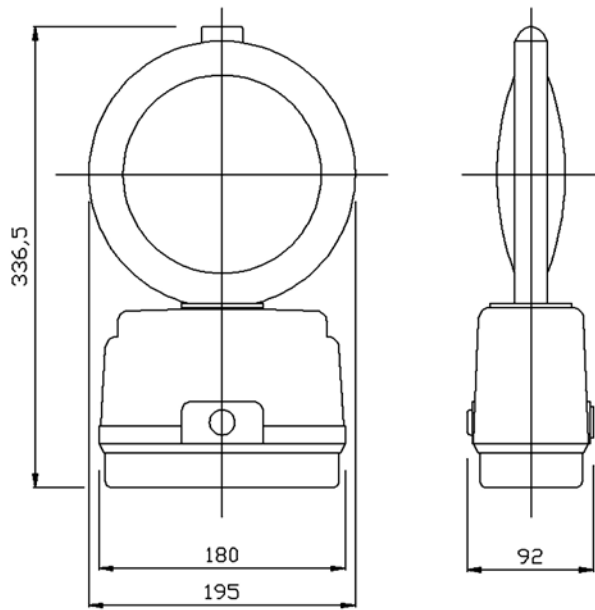


Trafi-B-LITE Synchro

High intensity emergency hazard warning synchronised lamps.

Benefits Include

- > **Flashing high intensity uni-directional lamp using a single, super bright LED with back light.**
 - > **Up to 15 lamps may be placed in line to give the impression of a single light source travelling along lamps from front to back. The back light provides a steady low level light enhancing the synchro effect. Can be deployed in any order as there is no master/slave**
 - > **High impact resistant tough polycarbonate uni-directional lens designed for maximum light output, incorporates retro-reflective ring and metal carrying handle**
 - > **Operates with one or two standard batteries**
- > **On/off switch facilitates simple, rapid operation and is concealed by a grommet**
 - > **This unit does not need VCA approval for vehicle applications**
 - > **Carrying base supplied separately. Part No D09.08069**



Weight (including batteries)

910g

DORMAN
Wennington Road
Southport PR9 7TN
T: +44 (0)1704 518000
F: +44 (0)1704 518001
E: sales@dorman.co.uk
www.dorman.co.uk



Certificate No. FM14371

www.dorman.co.uk