



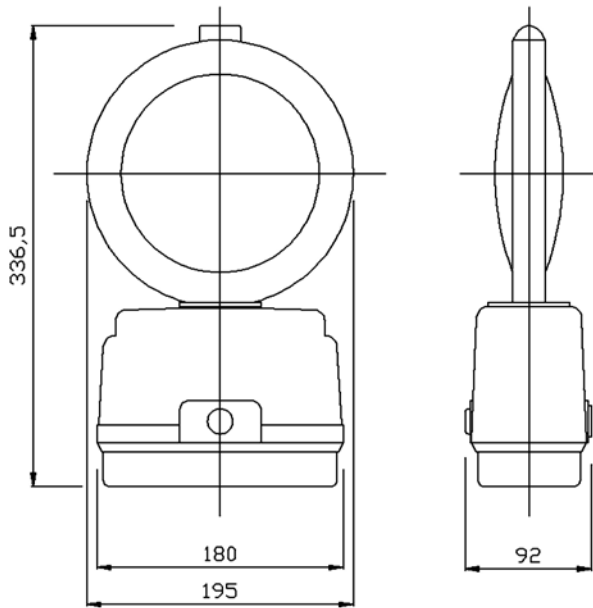
Trafi-B-LITE Synchro

Benefits Include

- > Outstanding performance super bright LED. Can be supplied with or without backlight
- > Robust polypropylene case provides high strength
- > Over 100 lamps may be placed in line to give the impression of a single light source travelling along the lamps. Can be deployed in any order as there is no master or slave
- > Tough, high impact resistant polycarbonate uni-directional polycarbonate lens designed for maximum light output incorporates retro-reflective ring and metal carrying handle

High intensity synchronised hazard warning lamp

- > On/off switch facilitates simple and rapid operation and is concealed by a grommet
- > Air alkaline batteries may be used for significantly extra life
- > Anti-theft bolt discourages battery theft
- > Cone fixing bracket available as optional extra with anti theft bolt
- > Carrying tray supplied separately, Part No B09.08069



Weight (excluding batteries)	685g
Standard zinc carbon battery	540g (each)
DAAB25 air alkaline battery	640g (each)
DAAB50 air alkaline battery	740g (each)

DORMAN
 Wennington Road
 Southport
 PR9 7TN
 T: +44 (0)1704 518000
 F: +44 (0)1704 518001
 E: sales@dorman.co.uk
 www.dorman.co.uk



Certificate No. FM14371

DORMAN
 The Leading Light