



Stop-Go LED TwinFLASH

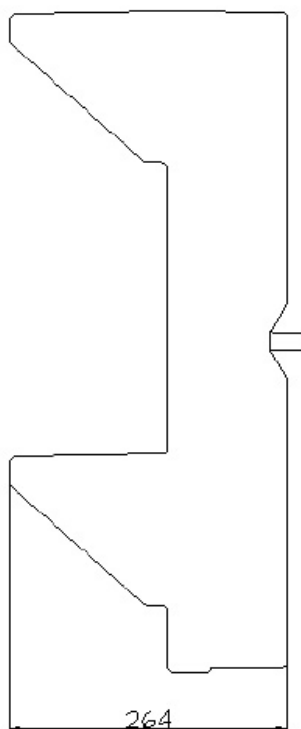
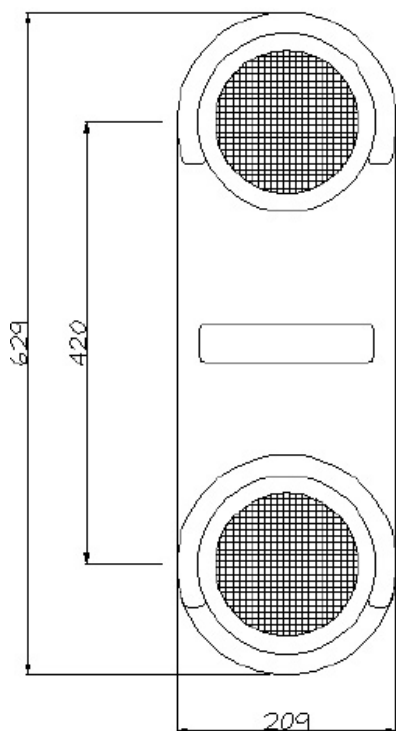
Benefits Include

- > Fully conforms to the requirements of the Low Voltage Directive 73/23/EEC with reference to BS EN 60598-1:1997
- > Fully conforms to EMC Emissions – BS EN 55014-1:2001
- > Powered by 220/240V AC mains electricity
- > 110/115V AC and 24V DC available upon request
- > Low power consumption
- > Tough vandal resistant housing made from a single density polyethylene moulding

Dorman's TwinFLASH is part of the company's comprehensive range of road traffic management lighting products

- > Vandal resistant polycarbonate lens
- > Remote control operation available
- > Supplied with 6m cable
- > UV stabilized
- > UL94 fire retardant test
- > Fixes to various sizes of posts with a fixing bracket
- > Vertical or horizontal fitting options
- > LED light sources provide high light output, and long life expectancy of approximately 100,000 hours

LED TwinFLASH



PRODUCT DATA SHEET

DORMAN
Wennington Road
Southport PR9 7TN
T: +44 (0)1704 518000
F: +44 (0)1704 518001
E: sales@dorman.co.uk
www.dorman.co.uk



Certificate No. FM14371