



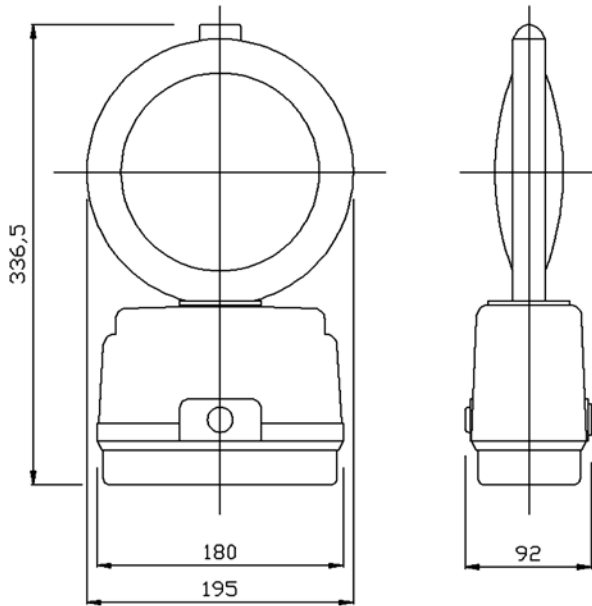
## HiLITE

### Benefits Include

- > **Tungsten light source with high intensity circuit**
- > **Robust polypropylene case provides high strength**
- > **Tough, high impact resistant uni-directional polycarbonate lens designed for maximum light output incorporates retro reflective ring and metal carrying handle**
- > **Bi-directional lens available on request, colour choice includes amber, red, green, blue and clear**
- > **Key operated on/off switch is tamperproof**

## High intensity hazard warning lamp for day time use

- > **2 batteries required to operate lamp. Battery orientation is not critical making replacement quick and easy**
- > **Anti-theft bolt discourages battery theft**
- > **Cone fixing bracket is available**
- > **Back fixing bracket is available with thief proof bolts to be specified at time of ordering**
- > **Designed to meet performance requirements of BS 12352:2000.**



Weight (excluding batteries)	685g
Standard zinc carbon battery	540g (each)
DAAB25 air alkaline battery	640g (each)
DAAB50 air alkaline battery	740g (each)

Flash rate – 60 flashes/min

DORMAN  
Rufford Road  
Crossens  
Southport PR9 8LA  
T: +44 (0)1704 220911  
F: +44 (0)1704 232221  
E: sales@dorman.co.uk  
www.dorman.co.uk



Certificate No. FM14371