



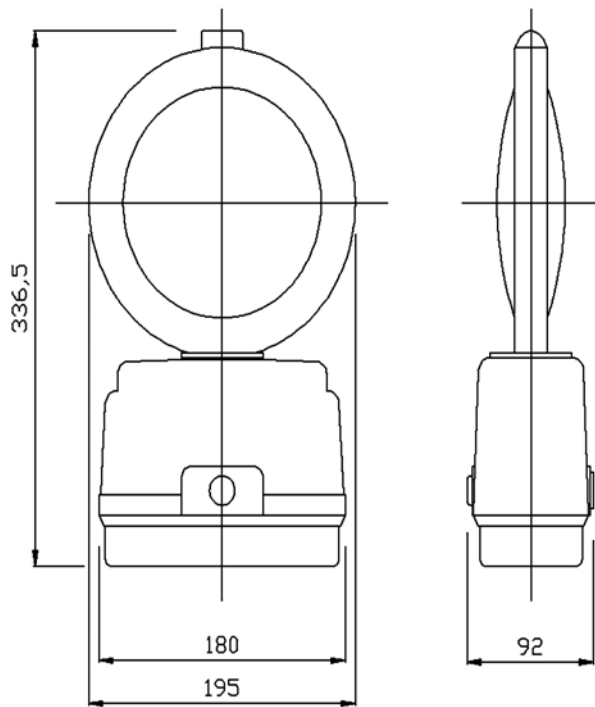
### LED SynchroGUIDE

#### Benefits include

- > Outstanding performance super bright LED with low intensity back light
- > Robust polypropylene body provides high strength
- > Over 100 lamps may be placed in line to give the impression of a single light source travelling along the lamps. Can be deployed in any order as there is no master or slave
- > High impact resistant tough polycarbonate uni-directional lens designed for maximum light output. Incorporates retro-reflective ring and metal carrying handle
- > On/off switch facilitates simple, rapid operation and is concealed by a grommet

### High intensity synchronised hazard warning lamp

- > Air alkaline batteries may be used for significantly extra life. Orientation of the batteries is not critical making replacement quick and easy
- > Battery life with Air alkaline battery:  
25amp hour 525-850 hours  
50amp hour 1050-1500 hours
- > Cone fixing bracket supplied as standard
- > Meets DFT specification for use on motorway and trunk roads. See Chapter 8



Weight (excluding batteries)	685g
Standard zinc carbon battery	540g (each)
DAAB25 air alkaline battery	640g (each)
DAAB50 air alkaline battery	740g (each)

Flash rate – 60 flashes/min

DORMAN  
Rufford Road  
Crossens  
Southport PR9 8LA  
T: +44 (0)1704 220911  
F: +44 (0)1704 232221  
E: sales@dorman.co.uk  
www.dorman.co.uk



Certificate No. FM14371

**DORMAN**  
The Leading Light