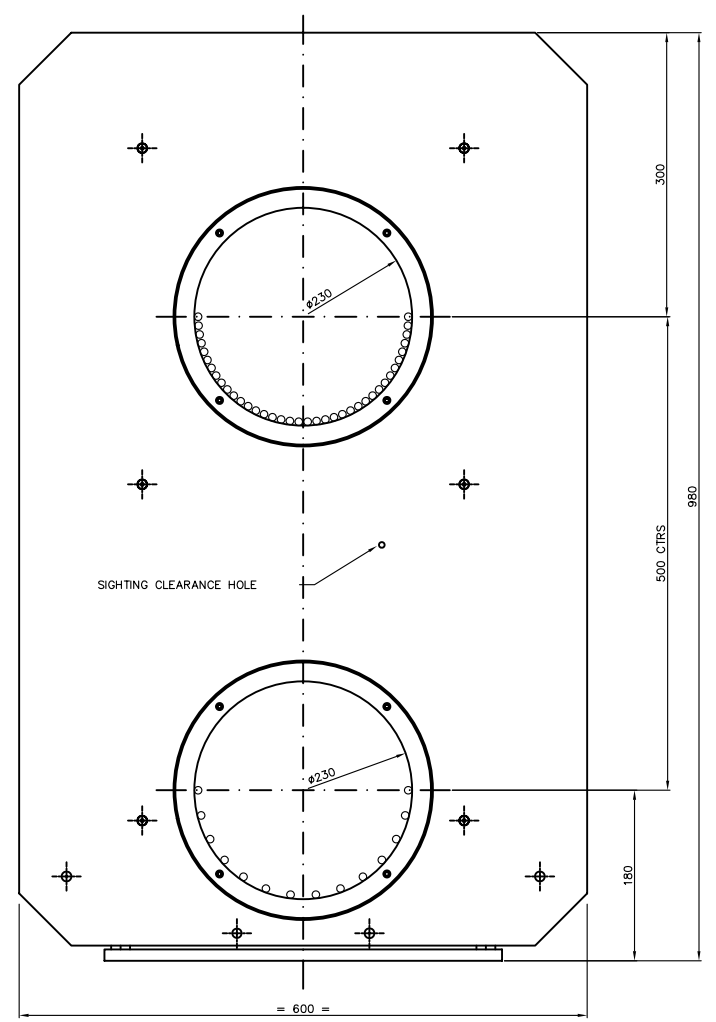
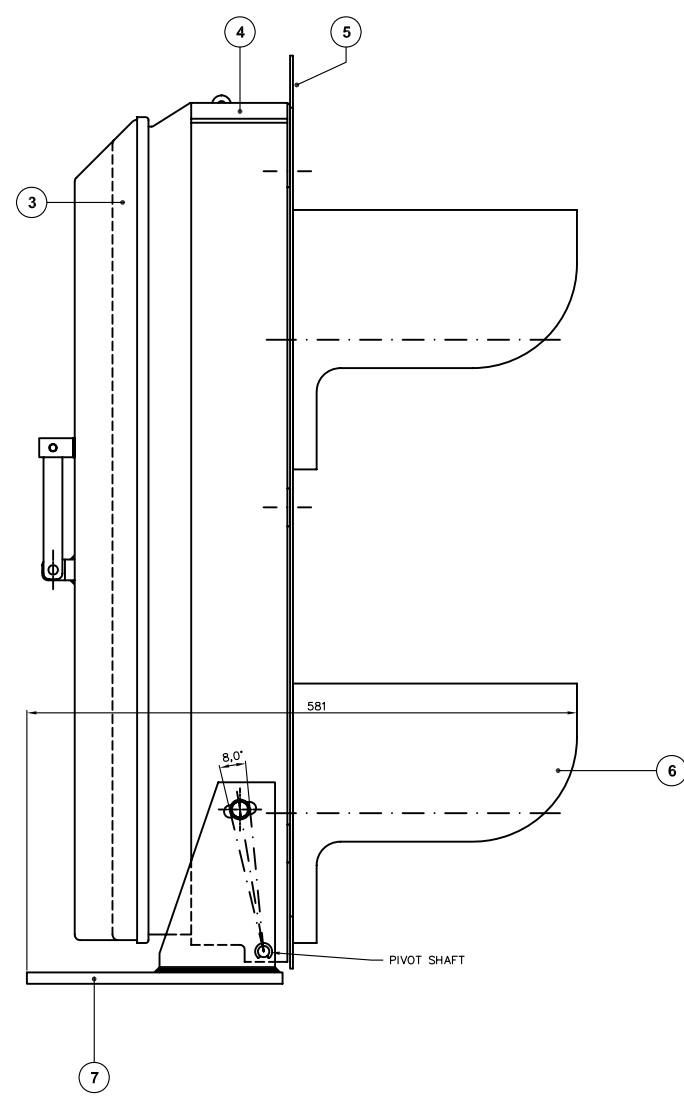
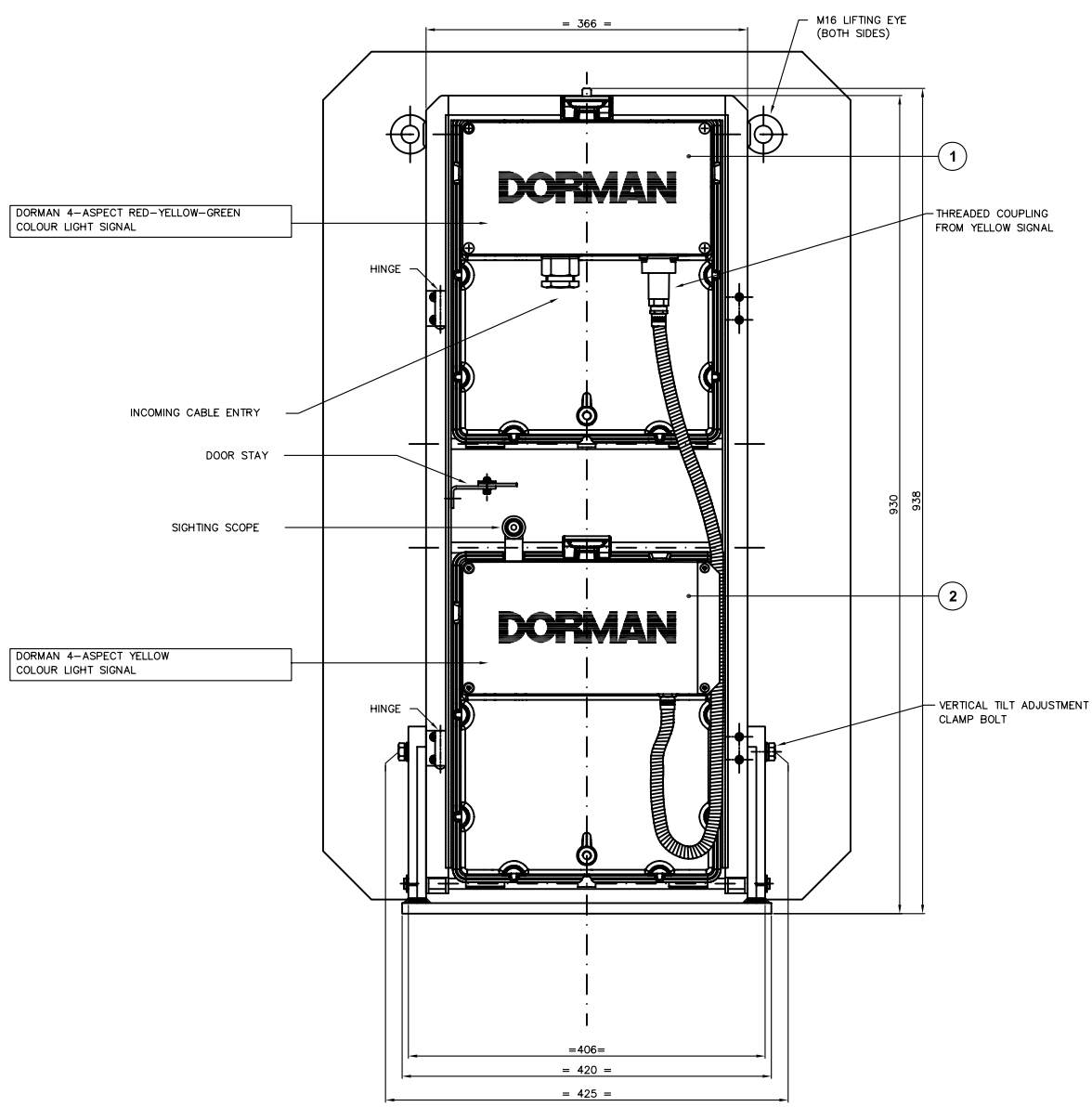
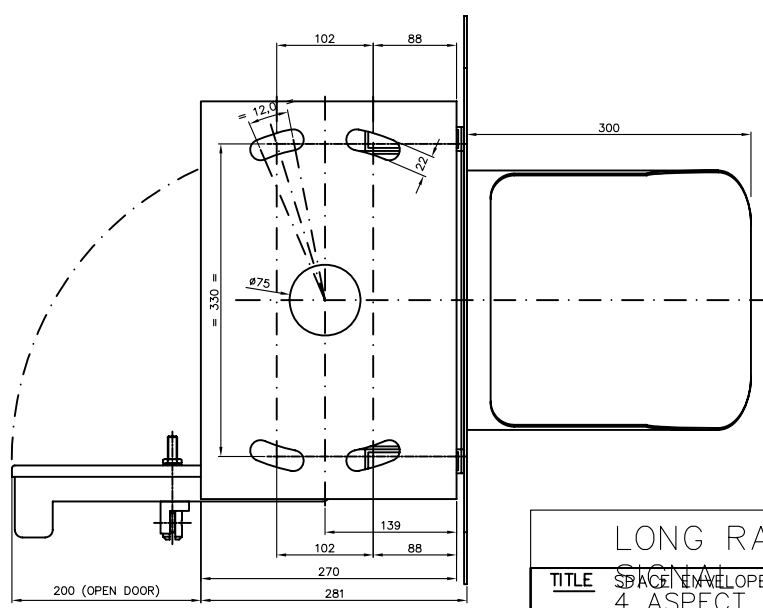


ITEM	QTY	PART N°	MATERIAL	DESCRIPTION
1	1	CLTM/4RYG/1P/BH	CAST ALUMINIUM ENCLOSURE	DORMAN 4-ASPECT RED-YELLOW-GREEN COLOUR LIGHT SIGNAL, PADS No. 0086/009207
2	1	CLTM/4Y--/1P/BH	CAST ALUMINIUM ENCLOSURE	DORMAN 4-ASPECT YELLOW COLOUR LIGHT SIGNAL, PADS No. 0086/009208
3	1	B20.19160	ALUMINIUM	DOOR
4	1	B20.19102	ALUMINIUM FABRICATION	2-LENS, 4-ASPECT FRAME
5	1	B20.19108	ALUMINIUM	BACK BOARD
6	2	B20.19104	ALUMINIUM	VISOR
7	1	B20.19124	ALUMINIUM FABRICATION	MOUNTING PLATE
	1	D86.85053		FRAME ASSEMBLY (FOR REFERENCE ONLY) PADS NO. TBA



VIEW ON REAR OF SIGNAL WITH
BACK COVER REMOVED

DORMAN SIGNAL MOUNTS DIRECTLY
TO INDICATOR SUPPORT FRAME
(AN ADJUSTABLE MOUNTING PLATE
IS NOT REQUIRED)



NOTES:-

- ALL ALUMINIUM COMPONENTS PAINTED ALL OVER WITH:
ONE COAT OF TRANSPED TWO PACK ETCH PRIMER 101
FOLLOWED BY:
ONE COAT OF BLACK MICACEOUS IRON OXIDE.
BR SPEC No. 70 ITEM 30. (FORWARD FACING PARTS)
ONE COAT OF LIGHT GREY MICACEOUS IRON OXIDE.
BR SPEC No. 70 ITEM 27A. (REAR FACING PARTS)
- WIRING DIAGRAM AND A DOCUMENT WALLET ATTACHED TO INTERNAL
FACE OF THE BACK COVER.
- HORIZONTAL ADJUSTMENT ~ ±6', VERTICAL ADJUSTMENT ~ ±4'
- ALL FASTENERS ~ STAINLESS STEEL.
- RKB221 BRASS PADLOCK, PADS No.0086/029003 IS NOT SUPPLIED
WITH THIS ASSEMBLY.

TOTAL ASSEMBLED SIGNAL MASS ~ 43Kg.
MAXIMUM MASS OF MODULES - 10Kg.

LONG RANGE LED COLOUR LIGHT

TITLE: SIGNAL ENVELOPE/MECHANICAL INTERFACE DRAWING 4 ASPECT GROUND MOUNTED CLS		THIRD ANGLE PROJ Document N° a101-1245-1	DORMAN TRAFFIC PRODUCTS LTD SOUTHPORT PR9 8LA ENGLAND
MATERIAL	TOLERANCES	DRAWN M.DURHAM APPROVED L.GREEN	THIS DOCUMENT AND THE INFORMATION THEREIN IS CONFIDENTIAL AND MAY NOT BE USED OR DISCLOSED WITHOUT WRITTEN AUTHORIZATION
	X + / - 0,25 X,0 + / - 0,10 X,00 + / - 0,05 X,000 + / - 0,025 ANGULAR + / - 0,25'	DATE 30/11/2004 SCALE NTS SHEET 1 OF 1 SHEETS	DRAWING No PART No. 0086/009160
DORMAN REF. No. CLGH/RYGY/1P/BH	CUSTOMER REF No.		ISSUE 1

DO NOT SCALE



1	02/06/05	MD	SEE DCC No. 2805
0	06/12/04	MD	DCC No. 2620
ISS	DATE	INI	ALTERATIONS