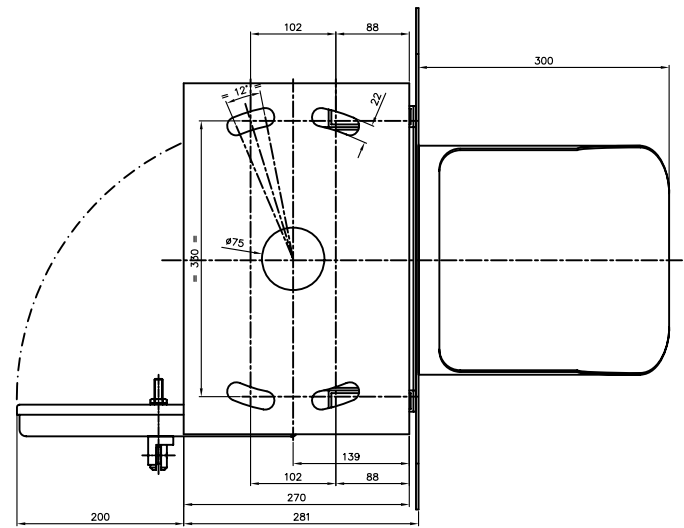
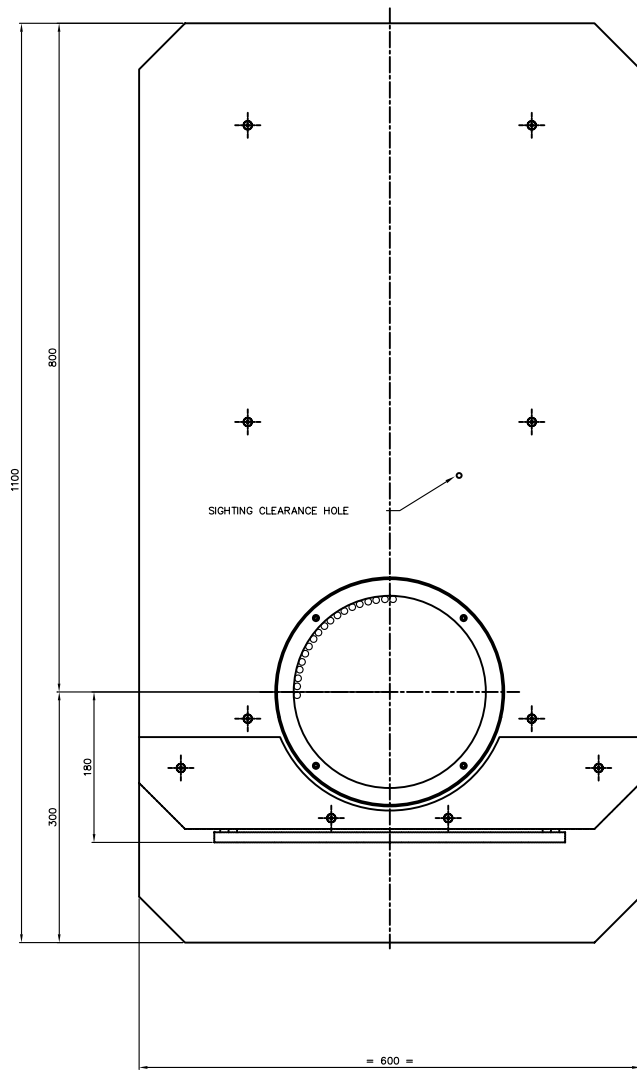
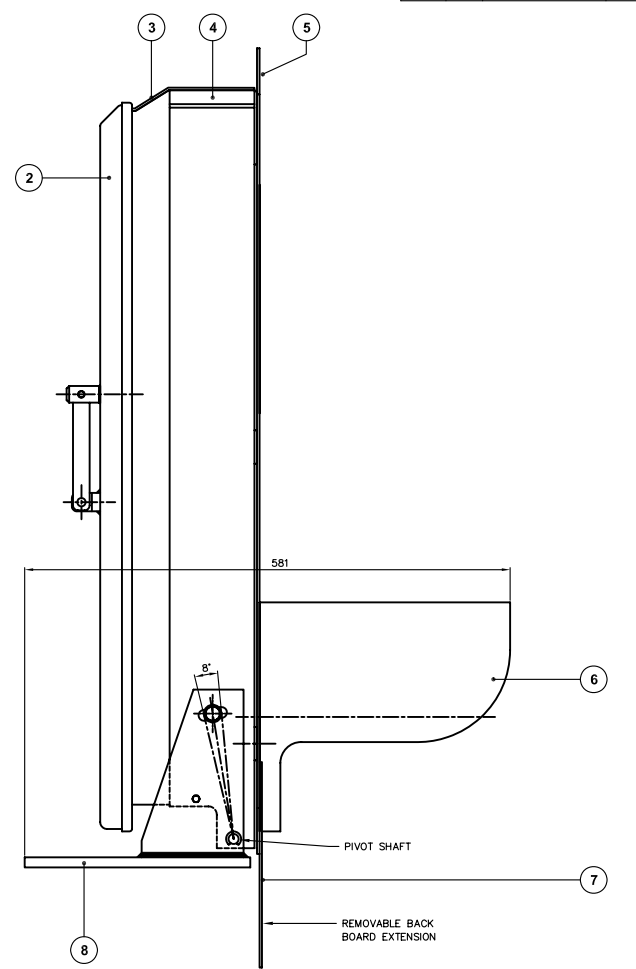
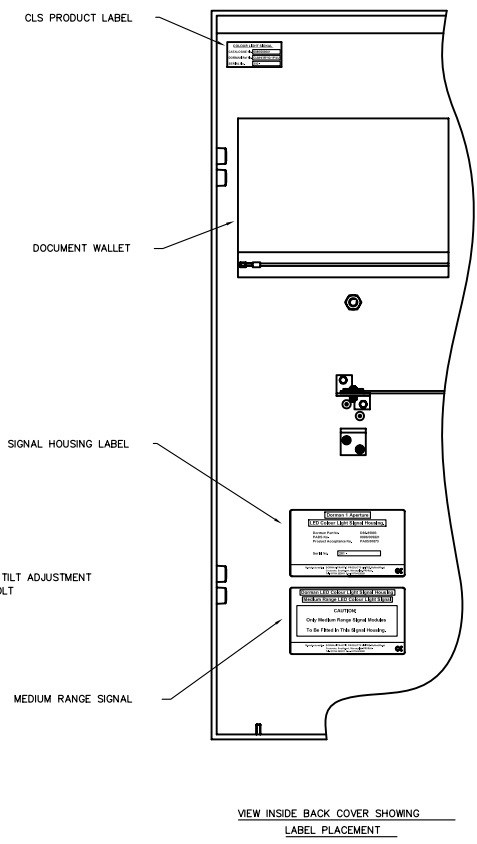
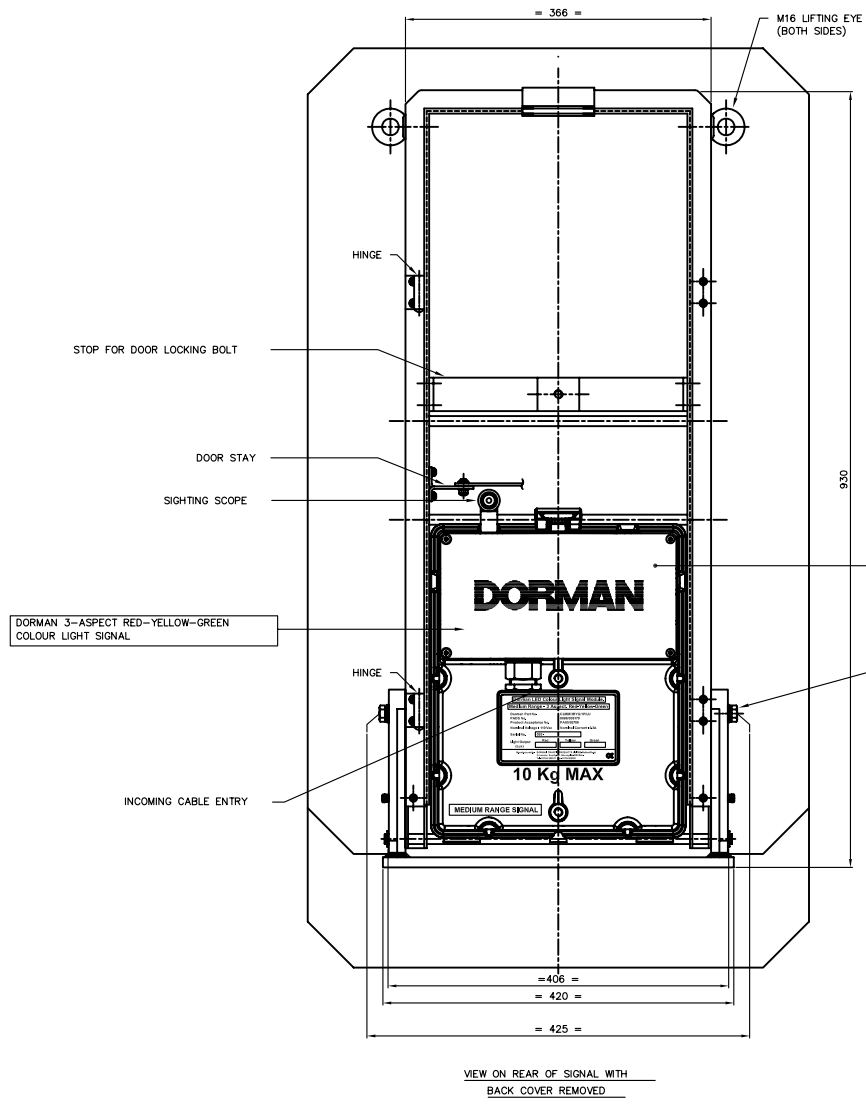


ITEM	QTY	PART N°	MATERIAL	DESCRIPTION
1	1	0086/009170	CAST ALUMINIUM ENCLOSURE	DORMAN 3-ASPECT RED-YELLOW-GREEN COLOUR LIGHT SIGNAL. REF. NO. CLMH/3RYG/1P/LU
2	1	B20.19109	ALUMINIUM	DOOR
3	1	B20.19161	ALUMINIUM SHEET	3 ASP BLANKING PLATE
4	1	B20.19102	ALUMINIUM FABRICATION	2-LENS, 4-ASPECT FRAME
5	1	B86.85007	ALUMINIUM	BACK BOARD 1-APERTURE, 4-ASPECT FRAME
6	1	B20.19104	ALUMINIUM	VISOR
7	1	B20.19123	ALUMINIUM	BACK BOARD EXTENSION
8	1	B20.19124	ALUMINIUM FABRICATION	MOUNTING PLATE
1	1	0086/009221		FRAME ASSEMBLY (FOR REFERENCE ONLY) DORMAN REF.NO. D86.85003



- NOTES:-
- ALL ALUMINIUM COMPONENTS PAINTED ALL OVER WITH: ONE COAT OF TRANSPED TWO PACK ETCH PRIMER 101 FOLLOWED BY: ONE COAT OF BLACK MICACEOUS IRON OXIDE. BR SPEC No. 70 ITEM 30. (FORWARD FACING PARTS) ONE COAT OF LIGHT GREY MICACEOUS IRON OXIDE. BR SPEC No. 70 ITEM 27A. (REAR FACING PARTS)
  - WIRING DIAGRAM AND A DOCUMENT WALLET ATTACHED TO INTERNAL FACE OF THE BACK COVER.
  - HORIZONTAL ADJUSTMENT ~ ±6°, VERTICAL ADJUSTMENT ~ ±4°
  - ALL FASTENERS ~ STAINLESS STEEL.
  - RKB221 BRASS PADLOCK, PADS No.0086/029003 IS NOT SUPPLIED WITH THIS ASSEMBLY.

TOTAL ASSEMBLED SIGNAL MASS ~ 33Kg.  
MAXIMUM MASS OF MODULES - 10Kg.

ISS	DATE	INI	ALTERATIONS
2	18/01/06	MD	SEE DCC 3028
1	12/12/05	DR	SEE DCC2996
0	14/11/05	MD	DCC No. 2956

**DORMAN**

MEDIUM RANGE LED COLOUR LIGHT

TITLE: ENVELOPE/MECHANICAL INTERFACE DRAWING  
3 ASP, 1 APER (LONG) CLS -LU

THIRD ANGLE PROJ  
Document N° a101-3210-1

DORMAN TRAFFIC PRODUCTS LTD  
SOUTHPORT PR9 BLA ENGLAND

THIS DOCUMENT AND THE INFORMATION THEREIN IS CONFIDENTIAL AND MAY NOT BE USED OR DISCLOSED WITHOUT WRITTEN AUTHORIZATION

DRAWING No PART No. ISSUE  
0086/009041 2

DRAWN M.DURHAM  
APPROVED L.GREEN  
DATE 14/11/2005  
SCALE NTS  
SHEET 1 OF 1 SHEETS