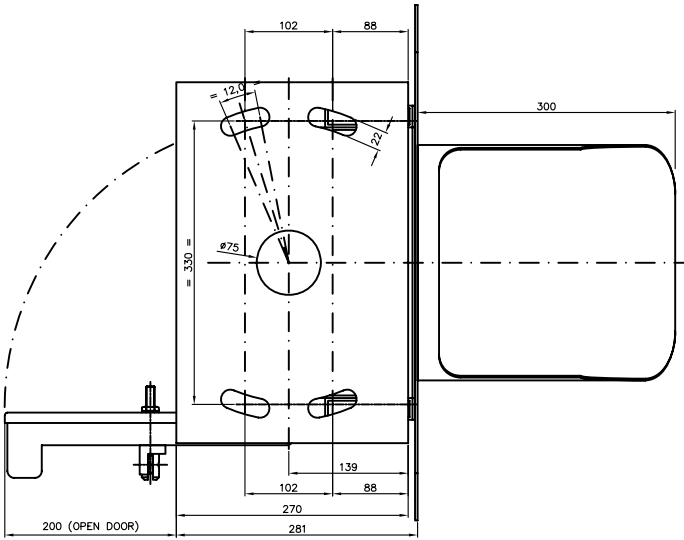
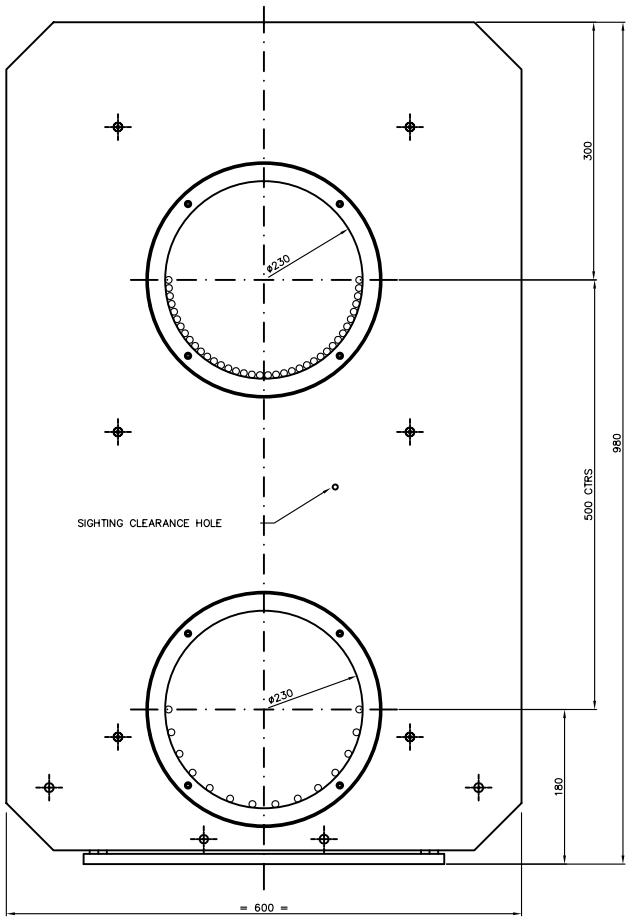
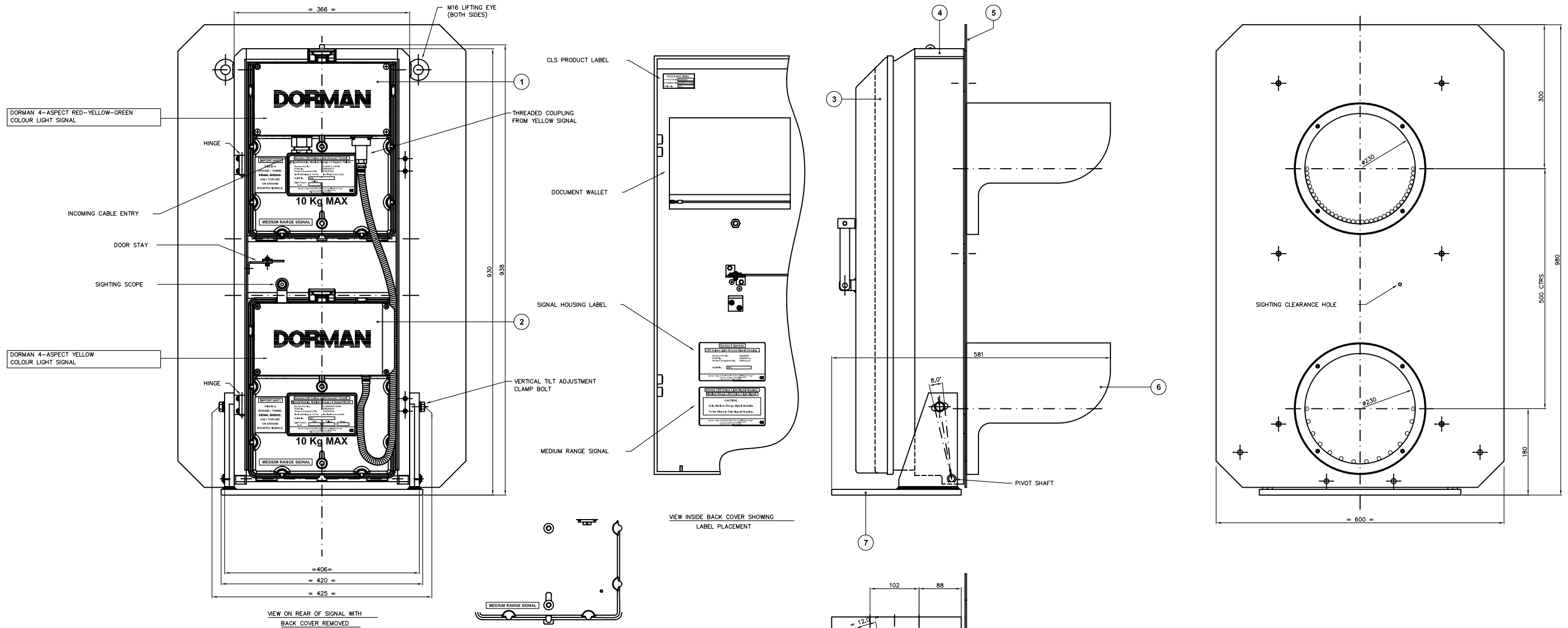


ITEM	QTY	PART N°	MATERIAL	DESCRIPTION
1	1	0086/009176	CAST ALUMINIUM ENCLOSURE	DORMAN 4-ASPECT RED-YELLOW-GREEN COLOUR LIGHT SIGNAL. REF. NO. CLMM/4RYG/1P/BH
2	1	0086/009177	CAST ALUMINIUM ENCLOSURE	DORMAN 4-ASPECT YELLOW COLOUR LIGHT SIGNAL. REF. NO. CLMM4Y-1P/BH
3	1	B20.19160	ALUMINIUM	DOOR
4	1	B20.19102	ALUMINIUM FABRICATION	2-LENS, 4-ASPECT FRAME
5	1	B20.19108	ALUMINIUM	BACK BOARD
6	2	B20.19104	ALUMINIUM	VISOR
7	1	B20.19124	ALUMINIUM FABRICATION	MOUNTING PLATE
1	1	D86.85053		FRAME ASSEMBLY ( FOR REFERENCE ONLY) PADS NO. TBA



- NOTES:-
- ALL ALUMINIUM COMPONENTS PAINTED ALL OVER WITH ONE COAT OF TRANSPED TWO PACK ETCH PRIMER 101 FOLLOWED BY :  
 ONE COAT OF BLACK MICACEOUS IRON OXIDE. BR SPEC No. 70 ITEM 30. (FORWARD FACING PARTS)  
 ONE COAT OF LIGHT GREY MICACEOUS IRON OXIDE. BR SPEC No. 70 ITEM 27A. (REAR FACING PARTS)
  - WIRING DIAGRAM AND A DOCUMENT WALLET ATTACHED TO INTERNAL FACE OF THE BACK COVER.
  - HORIZONTAL ADJUSTMENT ~ ±6°, VERTICAL ADJUSTMENT ~ ±4°
  - ALL FASTENERS ~ STAINLESS STEEL.
  - RK8221 BRASS PADLOCK, PADS No.0086/029003 IS NOT SUPPLIED WITH THIS ASSEMBLY.

TOTAL ASSEMBLED SIGNAL MASS ~ 43Kg.  
 MAXIMUM MASS OF MODULES - 10Kg.

DORMAN SIGNAL MOUNTS DIRECTLY TO INDICATOR SUPPORT FRAME (AN ADJUSTABLE MOUNTING PLATE IS NOT REQUIRED)

ALL DIMENSIONS IN mm UNLESS OTHERWISE STATED

<b>MEDIUM RANGE LED COLOUR LIGHT</b> TITLE SPACE ENVELOPE/MECHANICAL INTERFACE DRAWING 4 ASPECT GROUND MOUNTED CLS		THIRD ANGLE PROJ Document N° a101-3216-1		DORMAN TRAFFIC PRODUCTS LTD SOUTHPORT PR9 8LA ENGLAND	
		DRAWN M.DURHAM APPROVED L.GREEN DATE 14/11/2005 SCALE NTS SHEET 1 OF 1 SHEETS	THIS DOCUMENT AND THE INFORMATION THEREIN IS CONFIDENTIAL AND MAY NOT BE USED OR DISCLOSED WITHOUT WRITTEN AUTHORIZATION DRAWING No PART No. 0086/009047		ISSUE 1



DORMAN TRAFFIC PRODUCTS LTD  
 SOUTHPORT PR9 8LA ENGLAND

DRAWING No PART No.  
 0086/009047

ORIGINAL DRAWING FRAME A1 DO NOT SCALE

DORMAN REF. No.  
 CLMH/RYGY/1P/BH

CUSTOMER REF No.