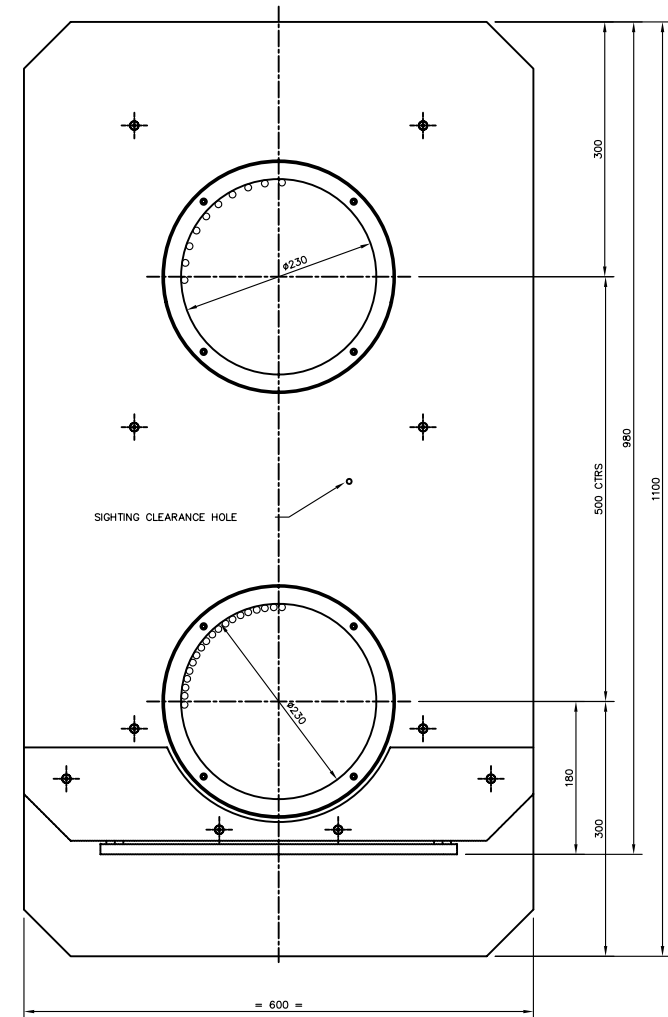
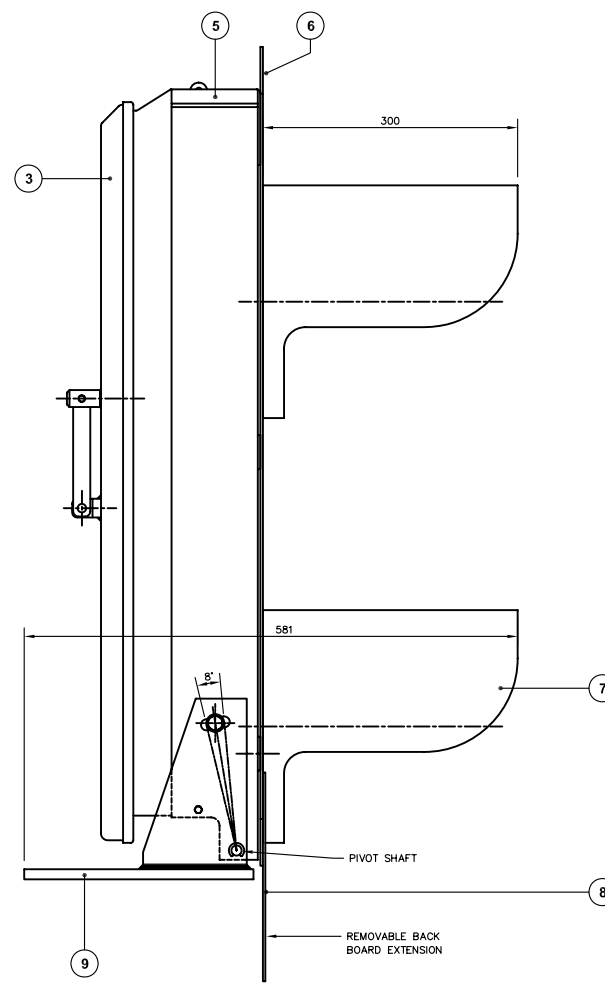
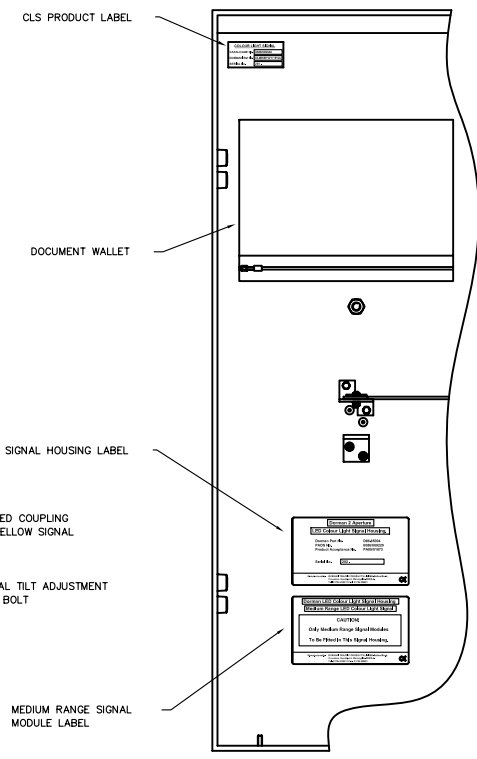
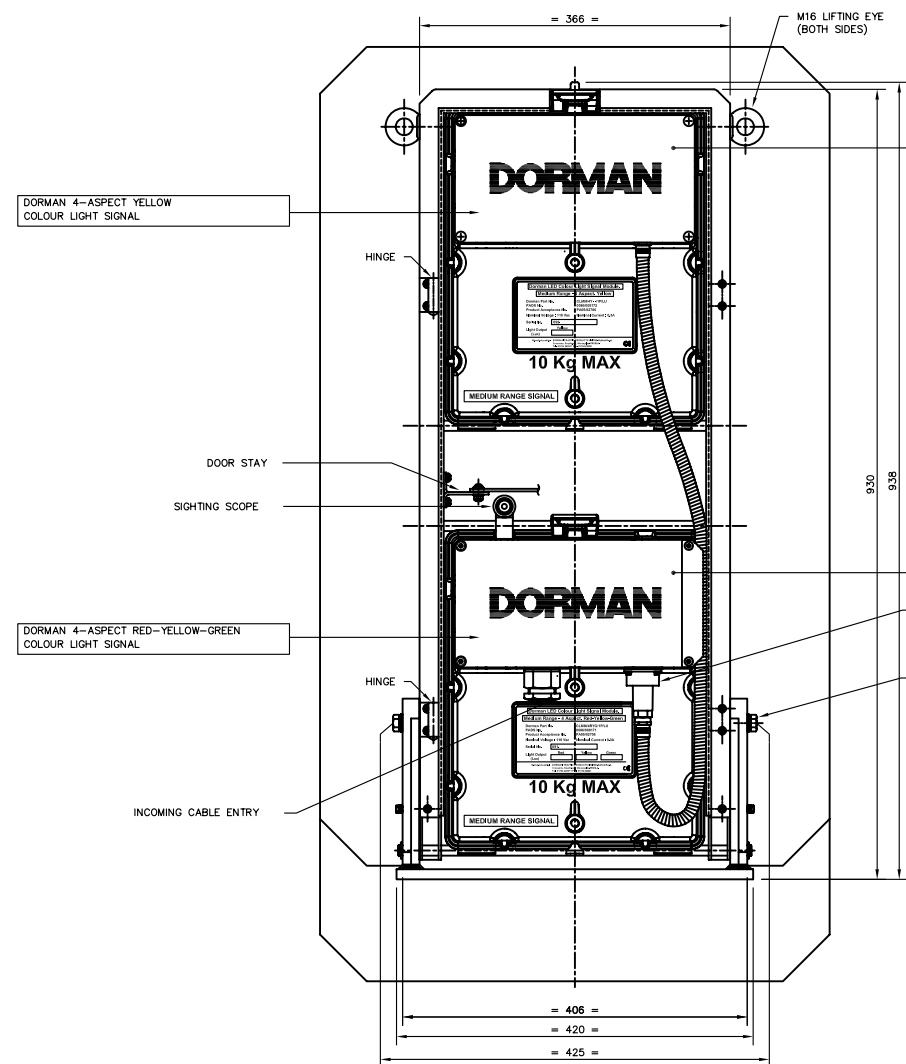
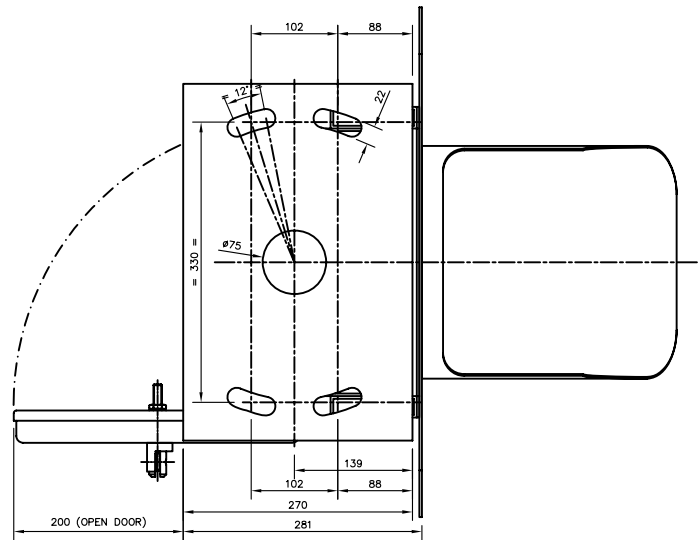


ITEM	QTY	PART N°	MATERIAL	DESCRIPTION
1	1	0086/009171	CAST ALUMINIUM ENCLOSURE	DORMAN 4-ASPECT RED-YELLOW-GREEN COLOUR LIGHT SIGNAL. REF. NO. CLMH/RYG/1P/LU
2	1	0086/009172	CAST ALUMINIUM ENCLOSURE	DORMAN 4-ASPECT YELLOW COLOUR LIGHT SIGNAL. REF. NO. CLMH/4Y---/1P/LU
3	1	B20.19109	ALUMINIUM	DOOR
4				
5	1	B20.19102	ALUMINIUM FABRICATION	2-LENS, 4-ASPECT FRAME
6	1	B20.19108	ALUMINIUM	BACK BOARD
7	2	B20.19104	ALUMINIUM	VISOR
8	1	B20.19123	ALUMINIUM	BACK BOARD EXTENSION
9	1	B20.19124	ALUMINIUM FABRICATION	MOUNTING PLATE
1		0086/009220		FRAME ASSEMBLY (FOR REFERENCE ONLY) DORMAN REF. NO. D86.85004



VIEW ON REAR OF SIGNAL WITH BACK COVER REMOVED

VIEW INSIDE BACK COVER SHOWING LABEL PLACEMENT



DORMAN SIGNAL MOUNTS DIRECTLY TO INDICATOR SUPPORT FRAME (AN ADJUSTABLE MOUNTING PLATE IS NOT REQUIRED)

TOTAL ASSEMBLED SIGNAL MASS ~ 43Kg.  
MAXIMUM MASS OF MODULES - 10Kg.

- NOTES:-
- ALL ALUMINIUM COMPONENTS PAINTED ALL OVER WITH: ONE COAT OF TRANSPED TWO PACK ETCH PRIMER 101 FOLLOWED BY: ONE COAT OF BLACK MICACEOUS IRON OXIDE. BR SPEC No. 70 ITEM 30. (FORWARD FACING PARTS) ONE COAT OF LIGHT GREY MICACEOUS IRON OXIDE. BR SPEC No. 70 ITEM 27A. (REAR FACING PARTS)
  - WIRING DIAGRAM AND A DOCUMENT WALLET ATTACHED TO INTERNAL FACE OF THE BACK COVER.
  - HORIZONTAL ADJUSTMENT ~ ±6', VERTICAL ADJUSTMENT ~ ±4'
  - ALL FASTENERS ~ STAINLESS STEEL.
  - RKB221 BRASS PADLOCK, PADS No.0086/029003 IS NOT SUPPLIED WITH THIS ASSEMBLY.

ISS	DATE	INI	ALTERATIONS
2	18/01/06	MD	SEE DCC 3028
1	12/12/05	DR	SEE DCC2996
0	14/11/05	MD	DCC No. 2956

**DORMAN**

MEDIUM RANGE LED COLOUR LIGHT		DORMAN TRAFFIC PRODUCTS LTD SOUTHPORT PR9 8LA ENGLAND	
TITLE: SIGNAL ENVELOPE/MECHANICAL INTERFACE DRAWING 4 ASP, 2 APER CLS - LU		THIRD ANGLE PROJ Document N° 0101-3209-1	
MATERIAL		DRAWN M.DURHAM APPROVED L.GREEN	
TOLERANCES		DATE 14/11/2005 SCALE NTS	
X + / - 0,25 X,0 + / - 0,10 X,00 + / - 0,05 X,000 + / - 0,025 ANGULAR + / - 0,25°		SHEET 1 OF 1 SHEETS	
DORMAN REF. No. CLMH/RYGY/1P/LU		DRAWING No PART No. 0086/009040	
CUSTOMER REF No.		ISSUE 2	

DO NOT SCALE

ORIGINAL DRAWING FRAME A1 DO NOT SCALE

ALL DIMENSIONS IN mm UNLESS OTHERWISE STATED