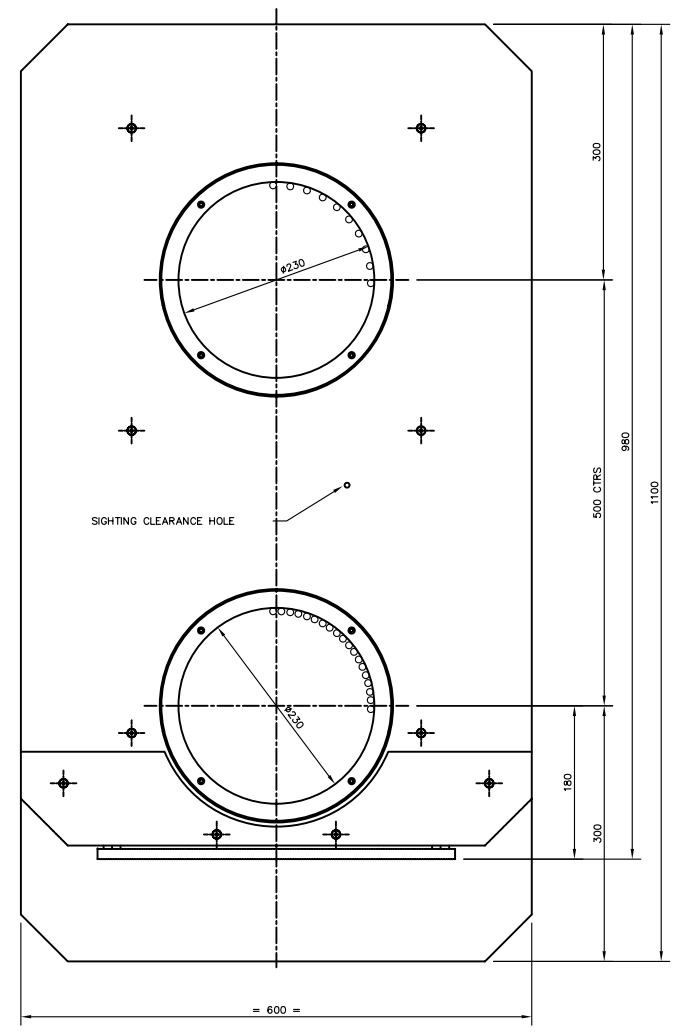
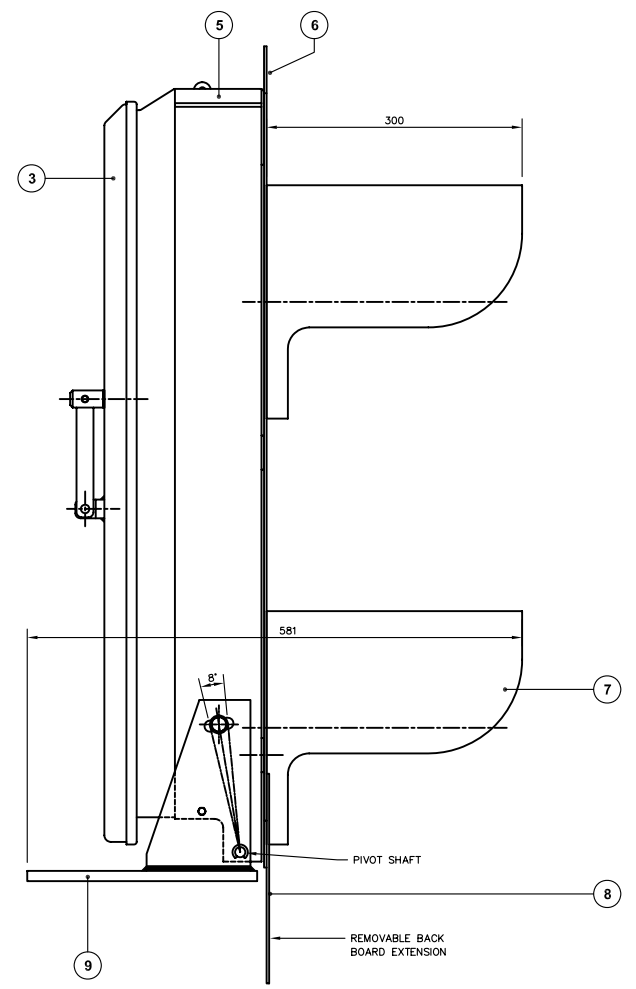
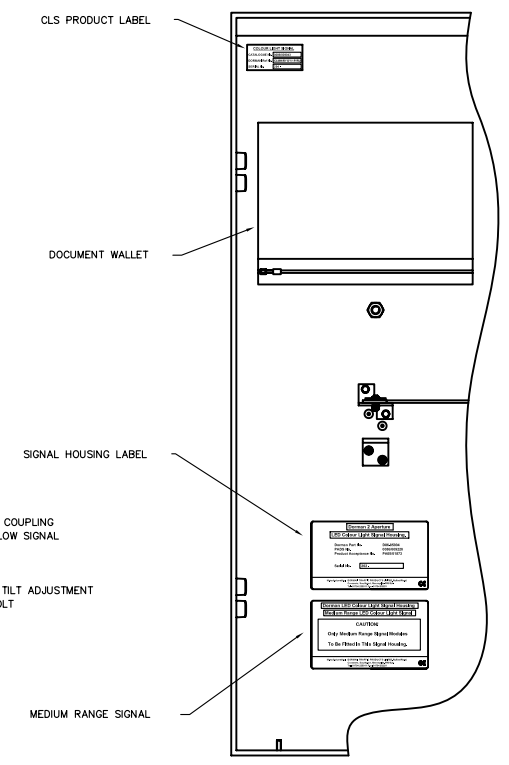
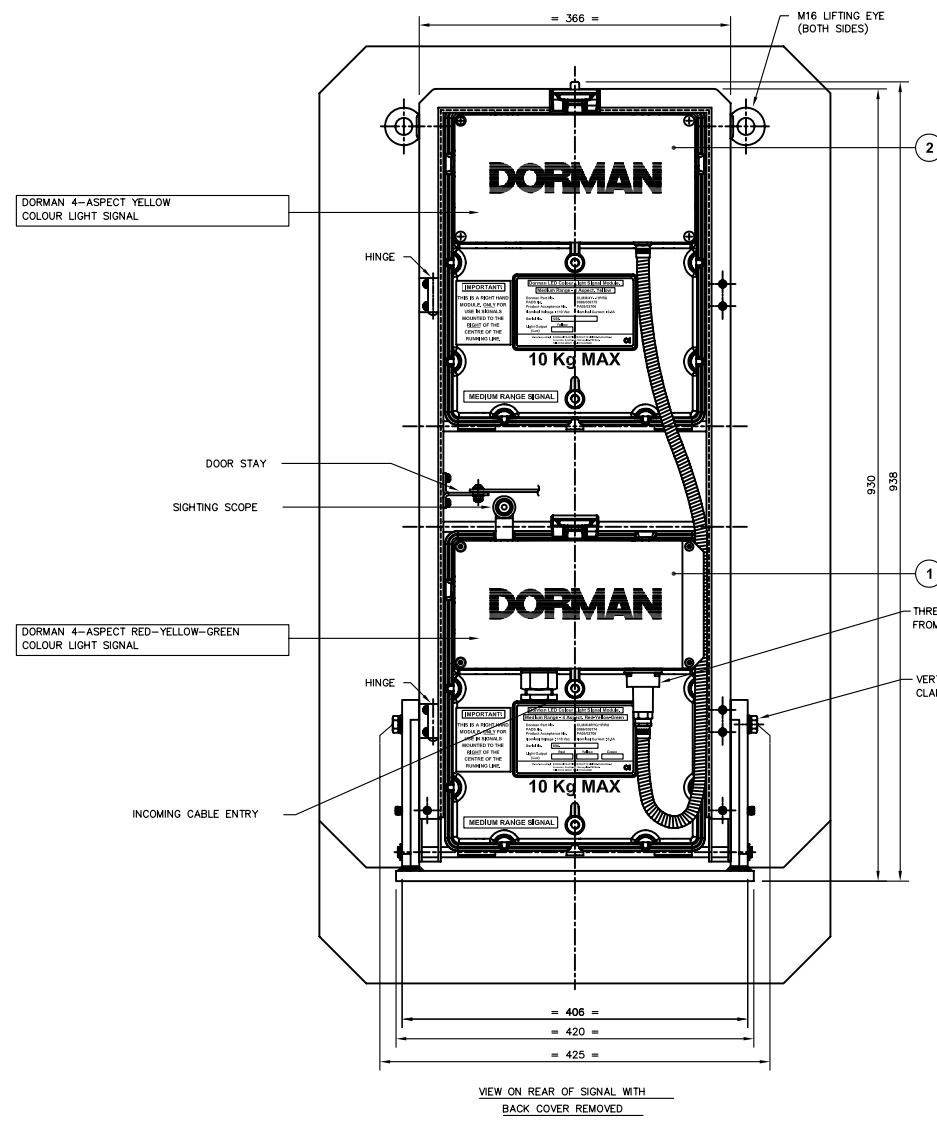


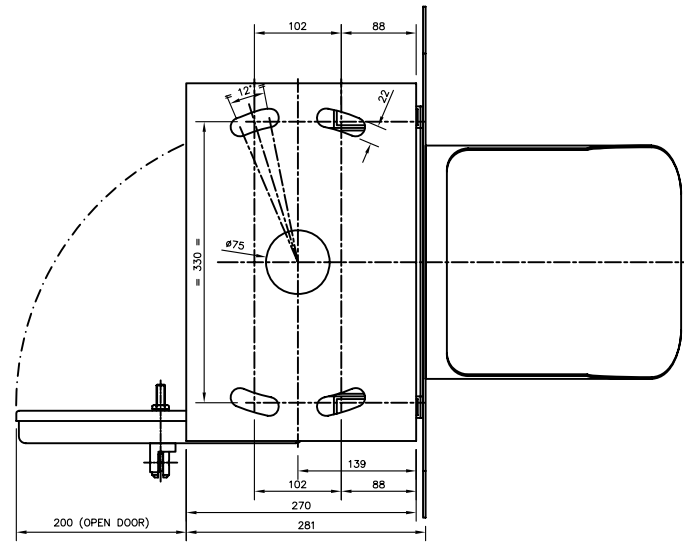
ITEM	QTY	PART N°	MATERIAL	DESCRIPTION
1	1	0086/009174	CAST ALUMINIUM ENCLOSURE	DORMAN 4-ASPECT RED-YELLOW-GREEN COLOUR LIGHT SIGNAL. REF. NO. CLMH/RYG/1P/RU
2	1	0086/009175	CAST ALUMINIUM ENCLOSURE	DORMAN 4-ASPECT YELLOW COLOUR LIGHT SIGNAL. REF. NO. CLMH/4Y---/1P/RU
3	1	B20.19109	ALUMINIUM	DOOR
4				
5	1	B20.19102	ALUMINIUM FABRICATION	2-LENS, 4-ASPECT FRAME
6	1	B20.19108	ALUMINIUM	BACK BOARD
7	2	B20.19104	ALUMINIUM	VISOR
8	1	B20.19123	ALUMINIUM	BACK BOARD EXTENSION
9	1	B20.19124	ALUMINIUM FABRICATION	MOUNTING PLATE
1		0086/009220		FRAME ASSEMBLY (FOR REFERENCE ONLY) DORMAN REF. NO. D86.B5004



VIEW ON REAR OF SIGNAL WITH BACK COVER REMOVED

VIEW INSIDE BACK COVER SHOWING LABEL PLACEMENT

DORMAN SIGNAL MOUNTS DIRECTLY TO INDICATOR SUPPORT FRAME (AN ADJUSTABLE MOUNTING PLATE IS NOT REQUIRED)



- NOTES: -
- ALL ALUMINIUM COMPONENTS PAINTED ALL OVER WITH: ONE COAT OF TRANSPERD TWO PACK ETCH PRIMER 101 FOLLOWED BY: ONE COAT OF BLACK MICACEOUS IRON OXIDE. BR SPEC No. 70 ITEM 30. (FORWARD FACING PARTS) ONE COAT OF LIGHT GREY MICACEOUS IRON OXIDE. BR SPEC No. 70 ITEM 27A. (REAR FACING PARTS)
 - WIRING DIAGRAM AND A DOCUMENT WALLET ATTACHED TO INTERNAL FACE OF THE BACK COVER.
 - HORIZONTAL ADJUSTMENT ~ ±6°, VERTICAL ADJUSTMENT ~ ±4°
 - ALL FASTENERS ~ STAINLESS STEEL.
 - RKB221 BRASS PADLOCK, PADS No.0086/029003 IS NOT SUPPLIED WITH THIS ASSEMBLY.

TOTAL ASSEMBLED SIGNAL MASS ~ 43Kg.
MAXIMUM MASS OF MODULES - 10Kg.

MEDIUM RANGE LED COLOUR LIGHT

TITLE: SIGNAL ENVELOPE/MECHANICAL INTERFACE DRAWING 4 ASP, 2 APER CLS - RU		THIRD ANGLE PROJ Document N° 0101-3212-1		DORMAN TRAFFIC PRODUCTS LTD SOUTHPORT PR9 BLA ENGLAND	
MATERIAL		TOLERANCES		THIS DOCUMENT AND THE INFORMATION THEREIN IS CONFIDENTIAL AND MAY NOT BE USED OR DISCLOSED WITHOUT WRITTEN AUTHORIZATION	
		X + / - 0,25		DRAWN M.DURHAM	
		X,0 + / - 0,10		APPROVED L.GREEN	
		X,00 + / - 0,05		DATE 14/11/2005	
		X,000 + / - 0,025		SCALE NTS	
		ANGULAR + / - 0,25°		SHEET 1 OF 1 SHEETS	
DORMAN REF. No. CLMH/RYGY/1P/RU		CUSTOMER REF No.		DRAWING No PART No. 0086/009043	
				ISSUE 2	

ISS	DATE	INI	ALTERATIONS
2	18/01/06	MD	SEE DCC 3028
1	12/12/05	DR	SEE DCC2996
0	14/11/05	MD	DCC No. 2956



DO NOT SCALE

ALL DIMENSIONS IN mm UNLESS OTHERWISE STATED