

| Parts List | | | | |
|------------|-----|---------------|--|--------------------------|
| ITEM | QTY | PART NUMBER | TITLE | MATERIAL |
| 1 | 1 | B20.19185 | MSL BACKBOARD ASSY | ALUMINIUM |
| 2 | 1 | B81.80021 | LOCKING BOLT ASSY | MILD STEEL (ZINC PLATED) |
| 3 | 1 | SLM2/G-1/P/G | SLM ASSEMBLY GREEN - GROUND PADS No.0086/001299 | ALUMINIUM |
| 4 | 1 | SLM2/R-1/P/G | SLM ASSEMBLY RED - GROUND PADS No.0086/001294 | ALUMINIUM |
| 5 | 1 | B81.70002 | MAIN HOUSING ASSEMBLY | ALUMINIUM |
| 6 | 2 | B81.80000M003 | VISOR (250 LONG) | ALUMINIUM |

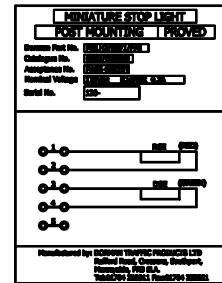
- NOTES:
- ALL ALUMINIUM COMPONENTS PAINTED ALL OVER WITH: POWDER COAT USING FERRO 384-70059 GREY FINE TEXTURE (COLOUR TO BS4800 00-A-05 GREY).
 - WIRING DIAGRAM ATTACHED TO INNER FACE OF COVER.
 - ALL FASTENERS - STAINLESS STEEL
 - RKB221 BRASS PADLOCK, PADS No. 0086/029003 IS NOT SUPPLIED WITH THIS ASSEMBLY.

DETAIL OF POST MOUNT & CLAMPING ARRANGEMENT.
NOTE: THIS SECTION IS COVERED BY CLOSURE OF THE HINGED DOOR FOR ANTI-VANDAL PURPOSES.

SITE INSTALLATION NOTE

WHEN INSTALLING MSL ONTO POST, ENSURE THE FOLLOWING TORQUE SETTINGS ARE MET:
4 OFF M6 SOCKET HD. SCREWS (CLAMPING BLOCK) - 6.8Nm.
3 OFF M8 GRIP SCREWS (MIDDLE OF CLAMP BLOCK) - 6.8Nm.

TOTAL ASSEMBLED SIGNAL MASS = 17kg.



PRODUCT / WIRING DIAGRAM LABEL DETAIL
FIXED TO INSIDE REAR DOOR

| ISS | DATE | INI | ALTERATIONS |
|-----|----------|-----|-----------------|
| 2 | 02/03/06 | MD | SEE DCC No.3079 |
| 1 | 23/11/05 | MD | SEE DCC No.2973 |
| 0 | 11/08/05 | MD | DCC No. 2861 |

DORMAN

| TITLE | | THIRD ANGLE PROJ | | DORMAN TRAFFIC PRODUCTS LTD | |
|--|-------|--------------------------|--|--|--|
| MSL ASSEMBLY (PHONE CROSSING OPERATOR) | | Document No. dt19-2617-1 | | SOUTHPORT PR9 BLA ENGLAND | |
| MATERIAL | | DRAWN M.DURHAM | | THIS DOCUMENT AND THE INFORMATION THEREIN IS CONFIDENTIAL AND MAY NOT BE USED OR DISCLOSED WITHOUT WRITTEN AUTHORIZATION | |
| TOLERANCES | | APPROVED L.GREEN | | DRAWING No PART No. | |
| X | + / - | DATE 11/08/2005 | | ISSUE | |
| X,0 | + / - | SCALE NTS | | 0086/009260 | |
| X,00 | + / - | SHEET 1 OF 1 SHEETS | | 2 | |
| X,000 | + / - | | | | |
| ANGULAR | + / - | | | | |