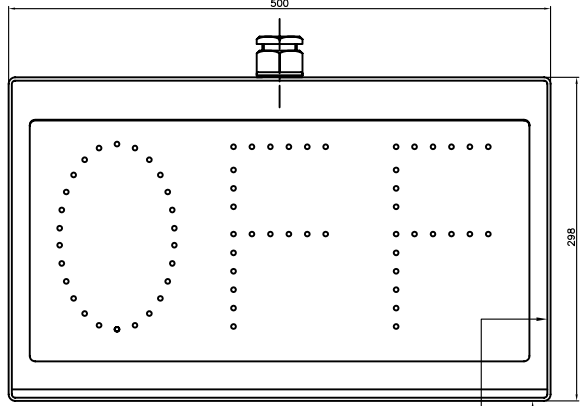


PART VIEW ON TOP FACE SHOWING MOUNTING HOLES

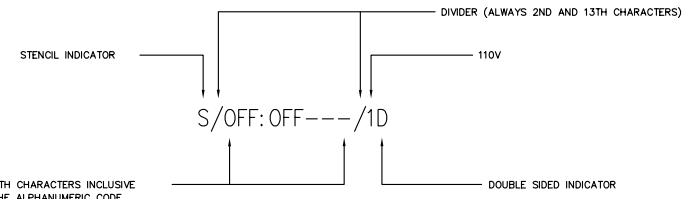


**STENCIL INDICATOR S/OFF---/1D SHOWN FOR ILLUSTRATION ONLY**

ITEM 1			
PADS No.	DORMAN PART No.	DESCRIPTION	REAR ENCLOSURE ASSY PART No.
XX	S/OFF:OFF---/1D	DOUBLE STENCIL INDICATOR,OFF,110V,PROVING	082.81020

NOTE:--IF NOT COVERED IN THE ABOVE TABLE, A CUSTOMER SPECIFIC INDICATOR ORDER MUST QUOTE THIS DRAWINGS GENERIC PADS NUMBER AND THE DORMAN PART NUMBER.

THE DORMAN PART NUMBER COMPRISES A 15-DIGIT CODE, SIGNIFYING THE FOLLOWING:--

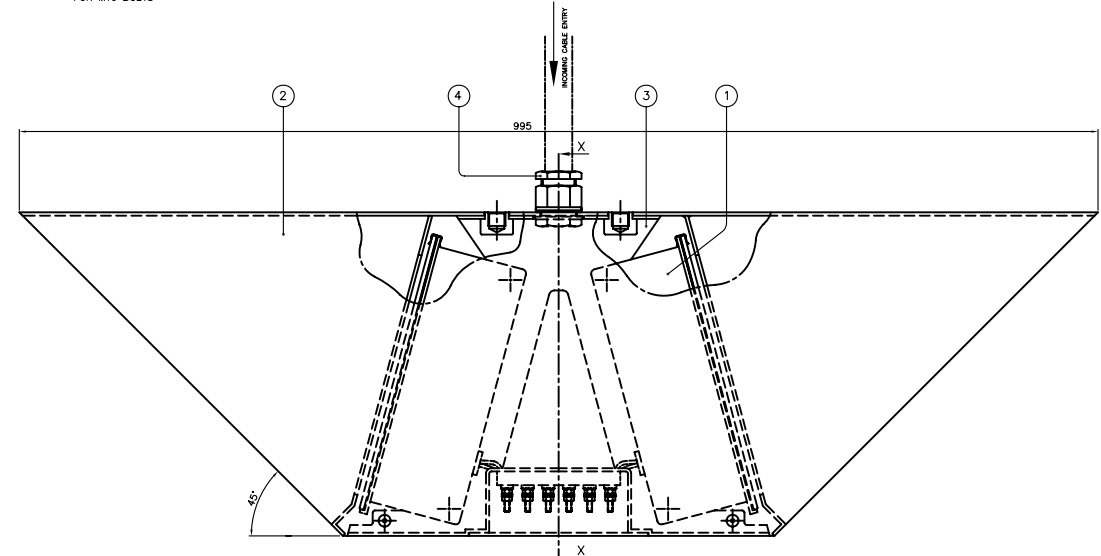


3RD TO 12TH CHARACTERS INCLUSIVE CONTAIN THE ALPHANUMERIC CODE TOGETHER WITH COLONS, WHICH SIGNIFY THE LETTERS AND NUMBERS TO BE DISPLAYED AND THE NUMBER OF SWITCHING CIRCUITS.

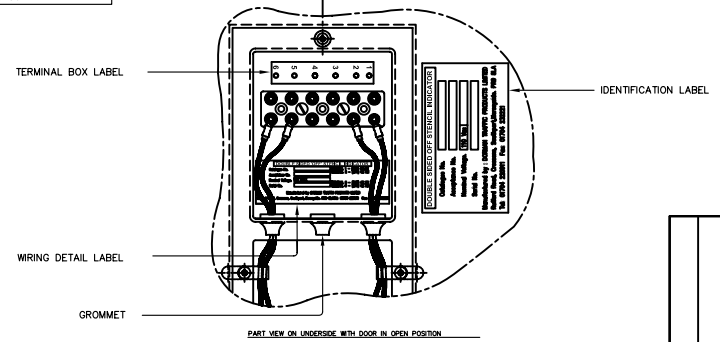
e.g. S/R: 5:MR: 5: M/1D

THE ABOVE DENOTES A STENCIL INDICATOR WHICH DISPLAYS R S M, INDEPENDANTLY CONTROLLED BY THREE CIRCUITS OPERATING ON 110V SUPPLY AND IS A DOUBLE SIDED UNIT, THE SAME DISPLAY AND CONTROL CIRCUITS BEING REPEATED FOR THE SECOND SIDE. (THE COLONS BETWEEN R, S AND M, SIGNIFIES THAT EACH LETTER HAS ITS OWN CIRCUIT).

ITEM	QTY	PART N°	MATERIAL	DESCRIPTION
1	1	SEE CHART	3 MM ALUMINIUM FABRICATION/CASTING	DOUBLE REAR ENCLOSURE ASSY
2	1	SEE CHART	3 MM ALUMINIUM FABRICATION/CASTING	DOUBLE REAR ENCLOSURE ASSY
3	1	B20.19097	3 MM ALUMINIUM FABRICATION	OUTER COVER
4	1	B20.19152	3MM ALUMINIUM FABRICATION	"A" FRAME
5	1	B19.18015	NYLON	M32 GPL CABLE GLAND



OUTSIDE FACES AND INTERNAL FRONT FACES TO BE PAINTED AS FOLLOWS  
 ETCH PRIMER 2 PACK --BASE BR SPEC 81 ITEM 104A  
 ACID BR SPEC 81 ITEM 104B  
 TOP COAT - MICACEOUS IRON OXIDE MATT BLACK BR SPEC 70 ITEM 30



ORIGINAL DRAWING FRAME A1 | DO NOT SCALE

**DO NOT SCALE**

DORMAN REF No.  
 GENERIC DOUBLE MINIATURE ALPHANUMERIC ROUTE INDICATOR

CUSTOMER REF No.

ALL DIMENSIONS IN mm UNLESS OTHERWISE STATED

TITLE		THIRD ANGLE PROJ	
DOUBLE MINIATURE ALPHANUMERIC ROUTE INDICATOR ASSY		Document N° a100-2211-1	
MATERIAL		DRAWN BT	
X	TOLERANCES	APPROVED LG	DATE 01/06/2005
X,0	+ / -	SCALE 1:1	SHEET 1 OF 1 SHEETS
X,00	+ / -		
X,005	+ / -		
X,000	+ / -		
ANGULAR	+ / -		
	0.25		
	0.10		
	0.05		
	0.025		
	0.25°		

0	07/06/05	BT	DCC No.2809
ISS	DATE	INI	ALTERATIONS

**DORMAN**

DORMAN TRAFFIC PRODUCTS LTD  
 SOUTHPORT PR9 6LA ENGLAND

THIS DOCUMENT AND THE INFORMATION THEREIN IS CONFIDENTIAL AND MAY NOT BE USED OR DISCLOSED WITHOUT WRITTEN AUTHORIZATION

DRAWING No PART No. ISSUE  
 GENERIC DOUBLE MINIATURE ALPHANUMERIC ROUTE INDICATOR 0